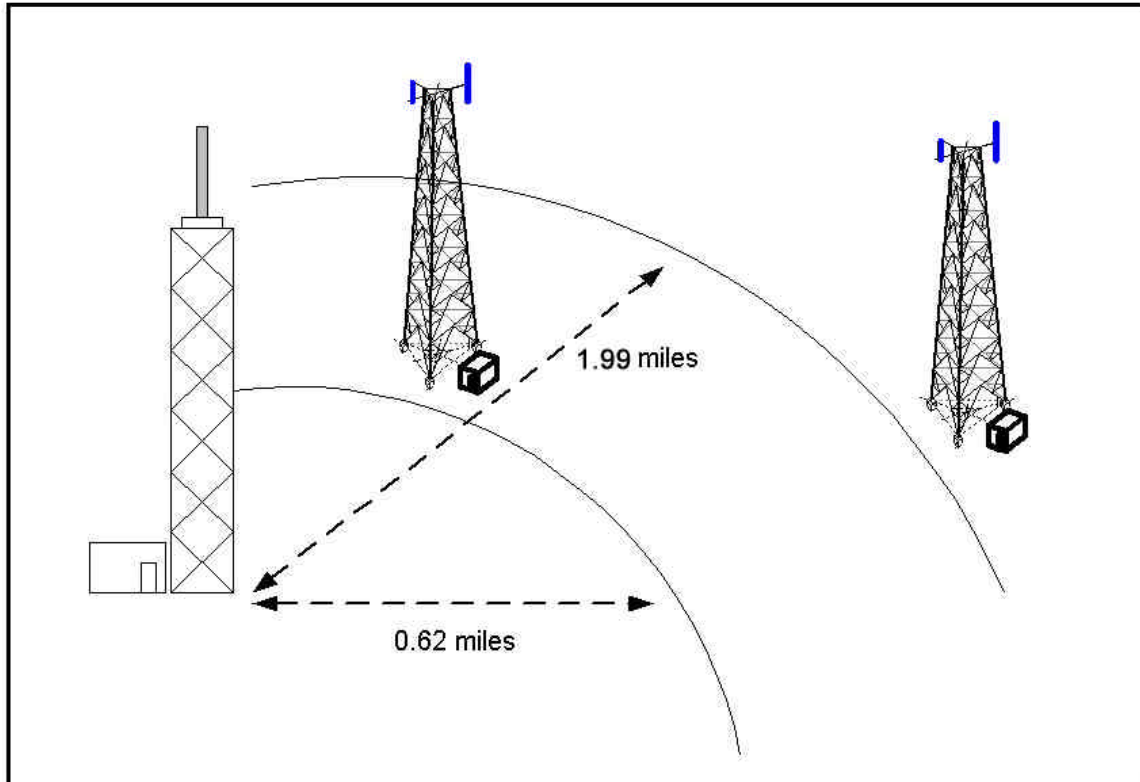


AM Towers



Base station towers close to AM towers can act as a reflector for the AM transmitting antenna and change its existing coverage.

The FCC requires cellular, PCS operators and tower owners to ensure that there is no effect on the AM stations' broadcast coverage if they are located in a 1.99 mile zone (or 3.2 km) for directional AM antennas and 0.62 mile zone (or 1 km) for omni directional AM antennas.

FCC regulations require cellular, PCS operators and tower owners to perform a "Proof of Performance" measurements before and after construction. The "Proof of Performance" tests are a series of standard field strength and pattern measurements around the AM towers to verify that the proposed tower has no effect on the AM antenna pattern.